

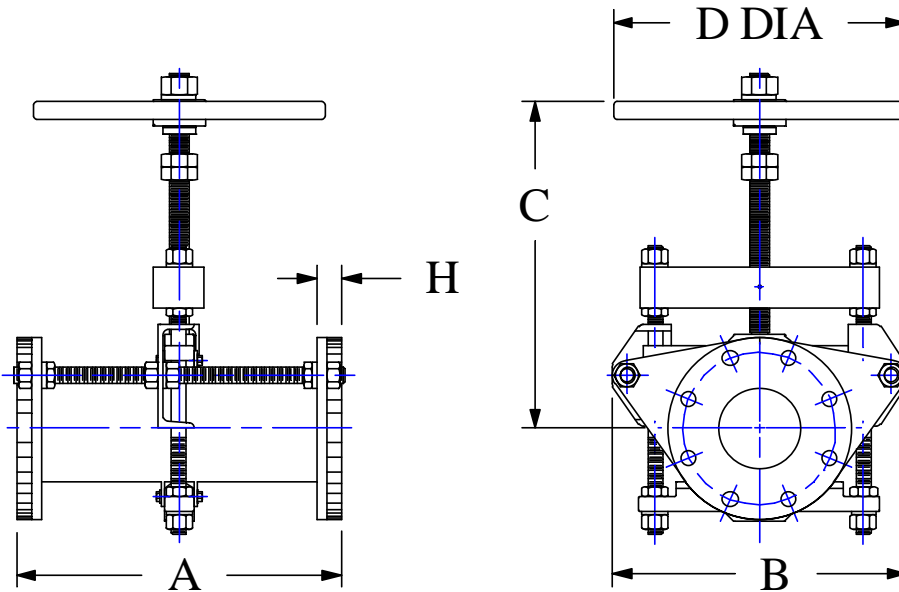
# Series DHO

## Full Round, Dual Pinch, Open Frame Construction, Hand Wheel Operated

- Clog resistant full round opening; valve can pass particles equal to line size
- Light weight
- Low pressure drop
- Drop tight closure
- On/Off or throttling service

### Specifications:

- Flanges: ANSI STD 125/150 lbs.
- Stem: 303 Stainless Steel
- Guide Rods: 303 Stainless Steel
- Pinch Bars: Ductile Iron, ASTM A536, Class 65-45-12
- Yoke: Carbon Steel



### Options:

- Sleeve Elastomer
- Epoxy Paint
- 316 Stainless Steel Stem
- Stem Cover Bellow

**Warning!** Open frame valves have no provision for containing process fluid during a sleeve failure; fluid may erupt unexpectedly from the valve. Do NOT use an open frame valve for fluids that are hot, acidic, flammable or toxic. Otherwise serious injury may result.

All Dimensions Are in Inches.

SIZE	1	1-1/2	2	2-1/2	3	4	5	6	8	10	12	14	16	18	20	24	
A	SHORT	4.0	4.8	5.2	5.75	6.0	8.0	-	10.5	16.0	20.0	24.0	28.0	32.0	36.0	40.0	48.0
	MEDIUM	5.5	6.0	7.0	7.50	8.0	9.0	10.0	12.0	21.3	26.5	29.0	-	-	-	-	-
	LONG	6.0	6.5	8.0	10.0	12.0	15.0	18.0	24.0	30.0	36.0	42.0	45.0	-	-	-	-
	X-LONG	-	-	-	-	-	16.0	-	24.0	32.0	40.0	48.0	-	-	-	-	-
B	5.5	7.0	9.2	9.4	11.0	14.5	16	21.3	24.2	27.7	32	35.5	42.0	45.0	54.0	60.0	
C Max	5	6.6	10.5	9.1	13	16.5	18.0	20.0	24.2	25.8	28.0	38.0	45.0	50.0	59.0	70.0	
D Dia	7.0			8.0		11.0		18.0	22.0		24.0	28.0	30.0	48.0		60.0	
H	0.8	0.5	0.6	1.1		1.2	1.5		1.1	1.2	1.5	1.7	-	2.5	-	-	
P Max	150 psi					100 psi				75 psi				50 psi			
Wt, lb	5	10	17	22	34	70	90	150	260	300	370	450	780	825	945	1100	