

Series DHC

Full Round, Dual Pinch, Enclosed Construction, Hand Wheel Operated

- Clog resistant full round opening.
- Low pressure drop
- No packing
- Drop tight closure
- On/Off or throttling service
- Self cleaning ACME threaded stainless steel stem for easy operation

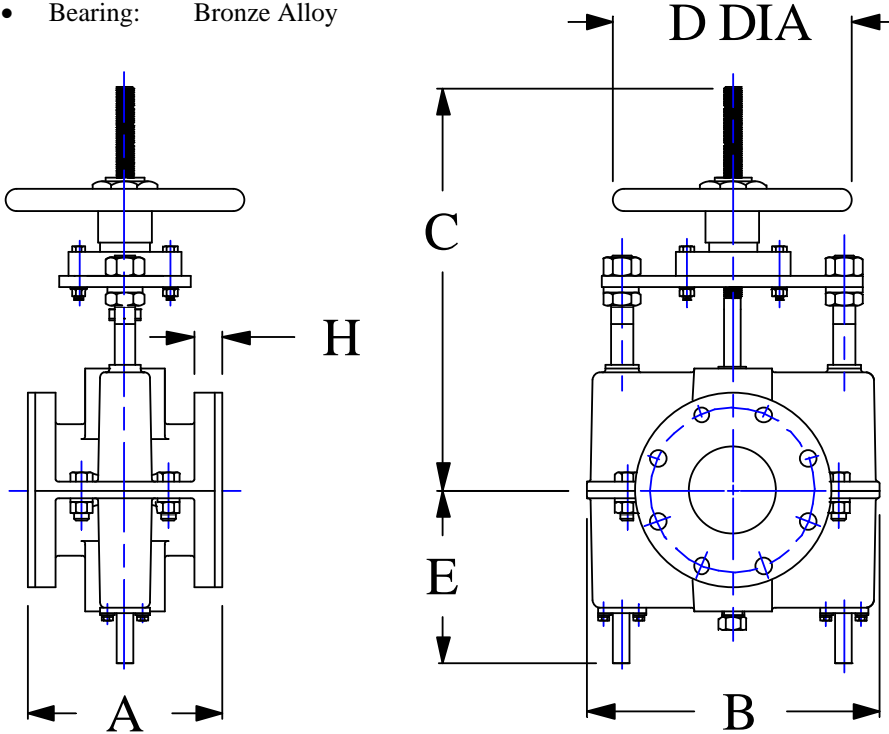
Specifications:

- Flanges: ANSI STD 125/150 lbs.
- Housing: Cast Iron, ASTM A48, Class 35 (Valve Sizes Up to 10")
Ductile Iron, ASTM A536-80, Class 65-45-12 (Valve Sizes 12" & Up)
- Stem: 303 Stainless Steel
- Guide Rods: 303 Stainless Steel
- Pinch Bars: Ductile Iron, ASTM A536-80, Class 65-45-12
- Bearing: Bronze Alloy



Options:

- Sleeve Elastomer
- Epoxy Paint
- ANSI STD 300 lbs Flange
- 316 Stainless Steel Stem
- Ductile Iron Housing
- Stem Cover Assembly
- Secondary Containment Package
- Limit Switches
- Chain Wheel
- Bevel Gear Box



All Dimensions Are in Inches.

SIZE	1	1-1/2	2	2-1/2	3	4	6, SHORT	6, LONG	8	10	12	14	16	18	20	24
A	5.5	6.5	7.0	7.5	8.0	9.0	10.5	17.7	21.3	26.5	29.0	28.0	32.0	36.0	40.0	48.0
B	5.7	7.6	8.5	8.5	11.0	13.0	20.1		22.7	26.2	32.0	34.3	40.5	43.7	50.5	54.0
C Max	8.0	8.5	9.5	9.7	10.5	18.6	24.2		29.6	33.0	41.5	44.5	47.0	52.0	55.0	58.0
D Dia	5.2	5.2	8.0	8.0	8.0	11.0	18.0		22.0	22.0	22.0	30.0	30.0	36.0	36.0	48.0
E	3.5	4.5	5.2	6.0	6.6	8.0	11.6		14.6	16.6	20.1	22.1	26.5	28.5	32.1	35.0
H	0.9	1.0	1.1	1.2	1.3		1.9		1.6	1.8	2.2	2.8	3.4		4.0	4.5
P Max	200 psi			175 psi			150 psi			100 psi			75 psi			
Wt, lb	15	25	35	40	65	128	250	300	425	560	900	100	110	1300	1500	190