

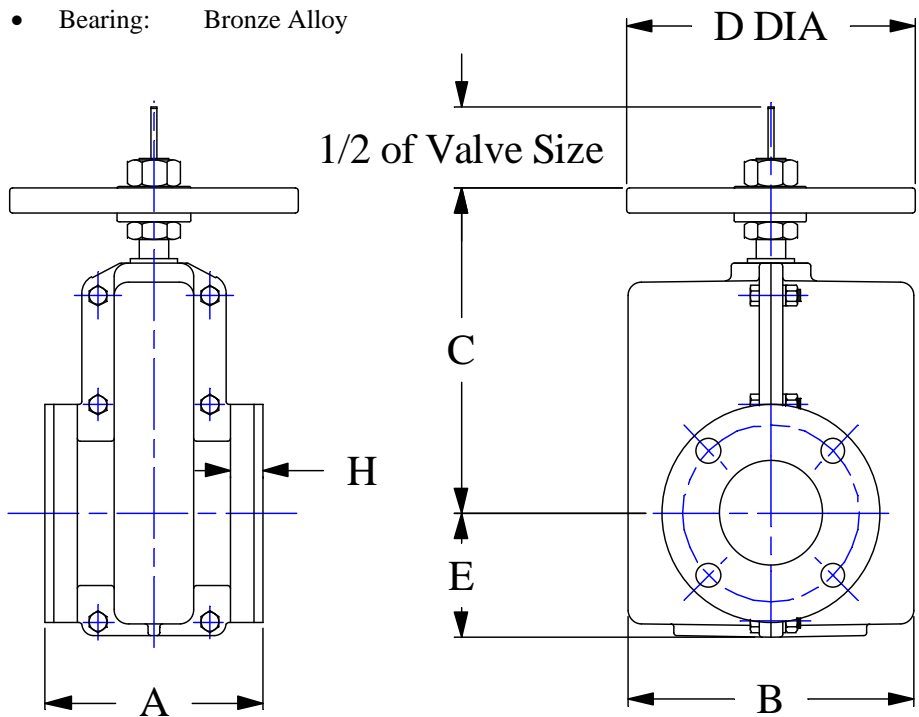
Series DHA

Full Round, Dual Pinch, Enclosed Construction, Hand Wheel Operated

- Clog resistant full round opening.
- Low pressure drop
- No packing
- Drop tight closure
- On/Off or throttling service
- Self cleaning ACME threaded stainless steel stem for easy operation

Specifications:

- Flanges: ANSI STD 125/150 lbs.
- Housing: Cast Iron, ASTM A48, Class 35 (Valve Sizes Up to 10")
Ductile Iron, ASTM A536-80, Class 65-45-12 (Valve Sizes 12" & Up)
- Stem: Carbon Steel
- Guide Rods: Carbon Steel
- Pinch Bars: Carbon Steel
- Bearing: Bronze Alloy



Options:

- Sleeve Elastomer
- Epoxy Paint
- ANSI STD 300 lbs Flange
- 316 Stainless Steel Stem
- Ductile Iron Housing
- Stem Cover Assembly
- Secondary Containment Package
- Limit Switches
- Chain Wheel
- Bevel Gear Box

All Dimensions Are in Inches.

| SIZE | 1 | 1-1/2 | 2 | 2-1/2 | 3 | 4 | 6 | 8 | 10 | 12 |
|--------|---------|-------|-------|-------|-------|---------|-------|-------|--------|-------|
| A | 5.50 | 6.50 | 7.00 | 7.50 | 8.00 | 9.00 | 10.50 | 16.00 | 20.00 | 24.00 |
| B | 5.00 | 6.50 | 7.50 | 8.25 | 9.50 | 12.00 | 15.62 | 19.50 | 23.25 | 35.00 |
| C Max | 8.00 | 8.30 | 10.00 | 11.00 | 11.50 | 13.50 | 17.37 | 21.50 | 23.50 | 29.00 |
| D Dia | 6.00 | 6.00 | 7.00 | 8.00 | 8.00 | 12.00 | 18.00 | 22.00 | 22.00 | 24.00 |
| E | 2.50 | 2.75 | 3.50 | 3.75 | 4.12 | 5.12 | 7.00 | 9.00 | 10.00 | 11.50 |
| H | 0.84 | 0.97 | 1.12 | 1.25 | 1.31 | | 1.44 | 1.62 | 1.81 | |
| P Max | 150 psi | | | | | 100 psi | | | 75 psi | |
| Wt, lb | 15 | 25 | 42 | 52 | 66 | 100 | 236 | 375 | 465 | 550 |