

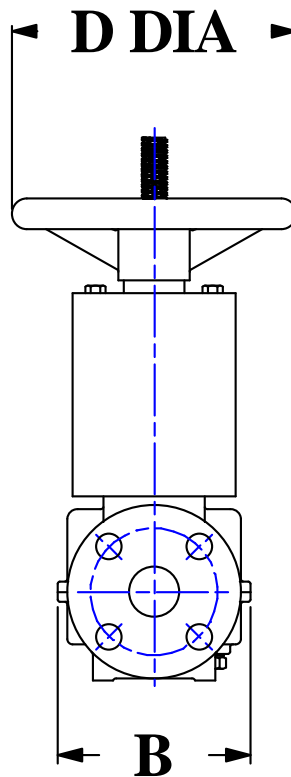
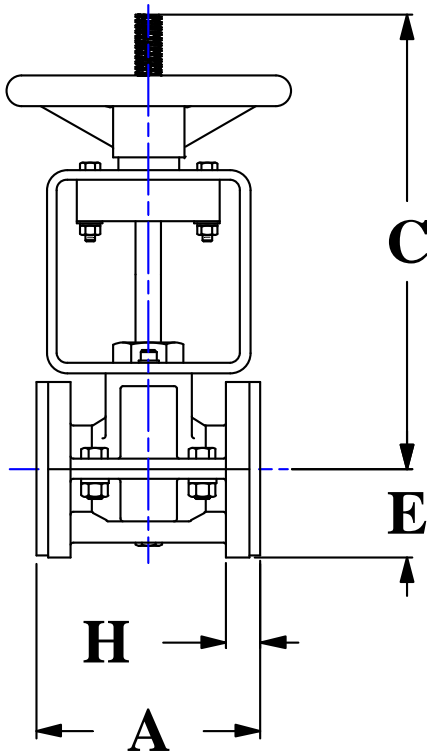
# Series CHR

## Full Round, Enclosed Construction, Hand Wheel Operated

- Clog resistant full round opening
- Low pressure drop
- No packing
- Drop tight closure
- High efficiency stainless steel ACME stem for easy operation
- Available with optional limit switches
- Simple rugged cast iron construction

### Specifications:

- Flanges: ANSI STD 125/150 lbs.
- Housing: Cast Iron, ASTM A48, Class 35
- Stem: 303 Stainless Steel
- Pinch Bar: 303 Stainless Steel
- Bearing: Bronze Alloy



### Options:

- Sleeve Elastomer
- Epoxy Paint
- ANSI STD 300 lbs Flange
- 316 Stainless Steel Stem
- Ductile Iron Housing
- Stem Cover Assembly
- Secondary Containment Package
- Limit Switches
- Chain Wheel

All Dimensions Are in Inches.

SIZE	1/2	3/4	1	1-1/2	2	2-1/2	3
A	4.25	5.50	5.50	6.50	7.00	7.50	12.00
B	3.75	3.87	4.75	5.25	6.25	9.25	9.00
C	6.87	7.00	9.65	10.00	10.31	13.71	14.00
D Dia	6.00		7.00			8.00	
E	1.93	2.00	2.18	2.56	3.06	3.56	3.81
H	0.69	0.75	0.84	0.97	1.12	1.25	1.69
P Max	200 psi					175 psi	
Wt, lb	14	16	18	24	33	55	71