

Series DHC

Full Round, Dual Pinch, Enclosed Construction, Hand Wheel Operated

- Clog resistant full round opening.
- Low pressure drop
- No packing
- Drop tight closure
- On/Off or throttling service
- Self cleaning ACME threaded stainless steel stem for easy operation

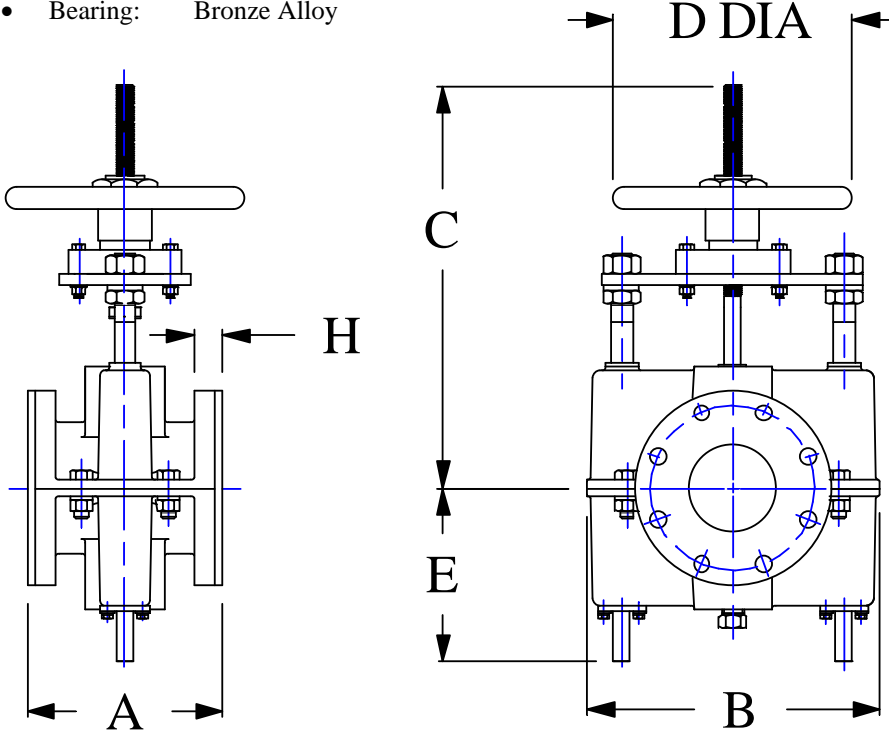
Specifications:

- Flanges: ANSI STD 125/150 lbs.
- Housing: Cast Iron, ASTM A48, Class 35 (Valve Sizes Up to 10")
Ductile Iron, ASTM A536-80, Class 65-45-12 (Valve Sizes 12" & Up)
- Stem: 303 Stainless Steel
- Guide Rods: 303 Stainless Steel
- Pinch Bars: Ductile Iron, ASTM A536-80, Class 65-45-12
- Bearing: Bronze Alloy



Options:

- Sleeve Elastomer
- Epoxy Paint
- ANSI STD 300 lbs Flange
- 316 Stainless Steel Stem
- Ductile Iron Housing
- Stem Cover Assembly
- Secondary Containment Package
- Limit Switches
- Chain Wheel
- Bevel Gear Box



All dimensions are in inches.

SIZE	1	1-1/2	2	2-1/2	3	4	6, SH.	6, LG.	8	10	12	14	16	18	20	24
A	5.50	6.50	7.00	7.50	8.00	9.00	10.50	17.75	21.37	26.50	29.00	28.00	32.00	36.00	40.00	48.00
B	7.62	7.62	8.50	8.50	11.00	13.50	20.12	22.75	26.25	32.0	34.37	40.50	43.75	50.50	54.00	
C Max	11.62	11.62	12.05	12.05	15.00	18.62	24.24	29.68	32.74	41.49	BEVEL GEAR BOX					
D Dia	7.00	7.00	7.00	7.00	8.00	12.00	18.00	22.00	BEVEL GEAR BOX							
E	4.50	4.50	5.25	5.25	6.56	8.00	11.62	14.62	16.68	20.12	22.18	26.50	28.50	32.15	35.00	
H	1.03	1.03	1.12	1.12	1.31	1.87	1.62	1.81	2.25	2.75	3.37	3.50	4.00			
P Max	200 psi			175 psi			150 psi			100 psi			75 psi			
Wt, lb	15	25	35	40	65	128	250	300	425	560	900	1000	1100	1300	1500	1900